

82-84 Connemarra Street Bexley NSW 2207

Tel: (02) 9587 7610

E: [bexley@synovumcare.com.au](mailto:bexley@synovumcare.com.au)

[www.synovumcare.com.au](http://www.synovumcare.com.au)

---

## Companion Room, 3 or 4 share

---

### Pricing

In addition to a **Basic Daily Fee<sup>1</sup>** and **Means Tested Care Fee<sup>2</sup>** Residents can choose to pay for their **Accommodation<sup>3</sup>** by a refundable deposit, a daily payment, or a combination of both.

**\$200,000 - Refundable Accommodation Deposit (RAD)**

*Or*

**\$31.23 - Daily Accommodation Payment (DAP)**

*Or*

**Combination of both of the above figures**

**(For example a 50% RAD of \$100,000 and the remainder as a DAP of \$15.62)**

It is important to note that there are strong protections in place to ensure that care is affordable for everyone. The Australian Government regulates the maximum costs you may have to pay. You will never be denied the care that you need because you cannot afford to pay.

### Specific Room Features

- Electric bed with matching wood side-table with lockable drawer and a double wardrobe
- Beautifully appointed upholstered lounge chair

### Accessible Common Areas

A large dining area and lounge room is available for use along with additional sitting areas, leading out onto a sunny and covered balcony with plenty of seating.

---

<sup>1</sup> The **Basic Daily Fee** is set by the Australian Government and is based on a % of the Age Pension.

<sup>2</sup> **Means Tested Care Fee** is an additional contribution to the cost of your care and is worked out by the Department of Human Services or Department of Veterans Affairs and is based on a person's income and assets.

<sup>3</sup> **Accommodation Payments** are required dependent on your means to pay. Residents without the means to pay an accommodation payment will not be required to do so.

82-84 Connemarra Street Bexley NSW 2207

Tel: (02) 9587 7610

E: [bexley@synovumcare.com.au](mailto:bexley@synovumcare.com.au)

[www.synovumcare.com.au](http://www.synovumcare.com.au)

---

## Companion Room, 3 or 4 share

---

A good size multi-purpose lounge and activity room is available with access to a large flat-screen TV and a computer with internet, games, music and Skype. This room is available for private use by residents and families to celebrate or catch-up.

Our landscaped back garden is available for all residents, families and visitors to use and incorporates covered sitting areas, vegetable gardens and a pathway designed to assist residents' journey through points of interest and leads back to our main lounge area.

Our balcony and garden areas are available for use by residents and their families for private lunches and BBQ's to celebrate special occasions.

### Our Inclusions at NO additional cost\*

\* Inclusions at no additional costs would be offered based on a residents assessed needs.

#### Specialist Staff

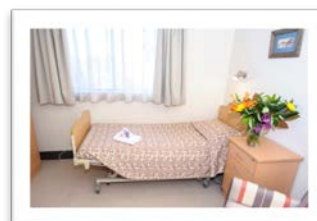
- Full time Dementia Care Support Coordinator
- Full time Physiotherapist
- Full time Lifestyle & Events Manager

#### For your convenience

- Access to the use of a telephone
- Access to private dining / function room
- Access / use of private BBQ's areas

#### Your Room

- Installation and management of personal fridges and TV's
- Personal double wardrobe
- Lockable drawer for personal items



#### Care and Support

- Coordinated allied health services
- Coordinated specialist services
- Counsellors and translators

82-84 Connemarra Street Bexley NSW 2207

Tel: (02) 9587 7610

E: [bexley@synovumcare.com.au](mailto:bexley@synovumcare.com.au)

[www.synovumcare.com.au](http://www.synovumcare.com.au)

---

## **Companion Room, 3 or 4 share**

---

- Religious support

### **Activities**

- Coordinated outings and a well-developed activities program
- Exercise Programs
- Resident computer with internet, games, music and Skype
- Weekly Happy Hour
- Mobile Library

### **Food and Drink**

- Fresh fruit bowls, filled daily
- Meal choices two hot meals per day
- Alcohol beverage offered with main meal
- Soft drinks

### **Laundry Services**

- Hand washing of items which require such
- Garment mending for people with no family support
- Ironing if required

### **End of Life Care**

- Palliative support
- Memorial services

### **Additional Services**

We can work with you to provide a range of additional services at further cost. Some additional services may include hairdressing, massage, beauty treatments and newspapers / magazines.